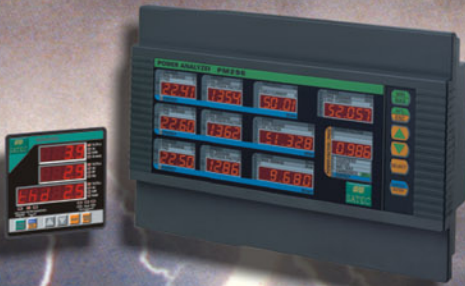


# SATEC

*Powerful Solutions*



**PM296**  
**RPM096**



# RPM096

## Harmonic and Disturbance Analysis

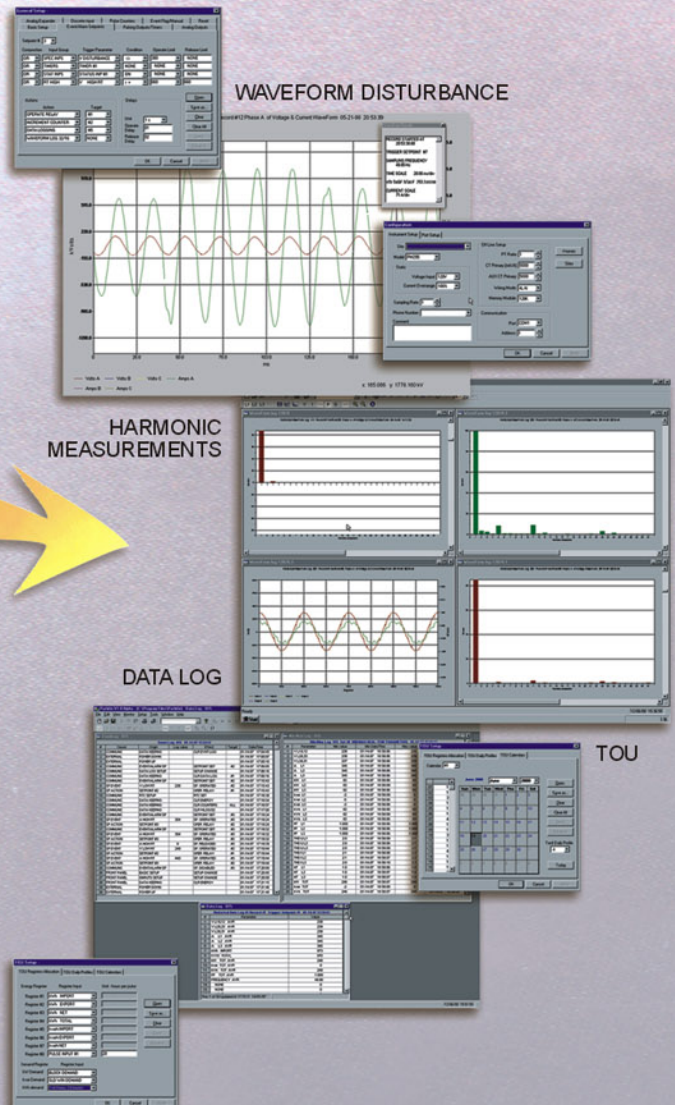
- ◆ real time harmonic monitoring
- ◆ waveform logging for individual harmonic analysis
- ◆ harmonic power **direction** flow
- ◆ waveform logging for disturbance analysis:
  - ◆ sag/swell
  - ◆ transient recording
  - ◆ fault

### You choose:

- ◆ any number of cycles after disturbance trigger
- ◆ how to allocate memory **Prefault/Postfault**
- ◆ 128 samples per cycle
- ◆ 32 samples per cycle



## Applied Software PASWIN



comprehensive  
and safe energy  
management.  
With the  
**PM296/RPM096**,  
SATEC brings you  
the complete  
solution for your  
energy needs of  
today - and  
tomorrow.

# SATEC

**NEW**

# PM296/RPM096



RPM096



PM296



RDM096

## Class 0.2S Accuracy ANSI C12.20 / IEC 687

Parameter	Accuracy		
	Reading,%	Full Scale (FS),%	Conditions
Voltage	0.1	0.01	10% to 120% FS
Line current	0.2	0.007	1% to 200% FS
Active power	0.2	0.002	PF  ≥ 0.5
Reactive power	0.2	0.002	PF  ≤ 0.9
Apparent power	0.2	0.002	PF  ≥ 0.5
Power factor		0.35	PF  ≥ 0.5, 2% current FS
Frequency	0.1		
Neutral (unbalanced) current	0.3	0.01	1% to 200% FS
Ampere demand	0.2	0.007	1% to 200% FS
kW demand	same as for active power		
kvar demand	same as for reactive power		
kVA demand	same as for apparent power		
Total harmonic distortion	1.5	0.2	≥ 1% FSI, I(I) ≥ 10% FSU(FSI)
Total demand harmonic distortion		1.5	≥ 1% FSI, I ≥ 10% FSI
Active energy import & export	Class 0.2 ANSI C12.20 / IEC 687		
Reactive energy import & export	Class 0.2 ANSI C12.20 / IEC 687		
Apparent energy	Class 0.2 ANSI C12.20 / IEC 687		

## Ordering Information

PM296 or RPM096-

### Voltage Inputs

0\* 690 VAC Nominal Voltage Input  
U 120 VAC Nominal Voltage Input

### Current Inputs

1 1 Ampere  
5\* 5 Ampere

### Power Supply

ACDC\* 95 - 250 VAC and 90 - 330 VDC  
1DC 10 - 20 VDC  
2DC 20 - 38 VDC  
3DC 36 - 72 VDC

### Analog Output

00 No Analog Output  
A2 Two Programmable Analog Outputs (0 ± 1.0 - 20.4 - 20 mA)

### Analog Voltage Input DC

AI120 0.4 - 20 V  
AI100 2 - 100 V  
AI300 6 - 300 V

### Neutral Current Input

NI Neutral Current 1 Amp Input  
N5 Neutral Current 5 Amp Input

\* Standard

Example:

PM296-0-5-ACDC-A4-0 or PM296-5-ACDC-A4

RDM096-

### Mounting

M Panel Mounted  
P Portable

### Cable Length

2L 21.18 Meter (6Ft)  
3L 31.30 Meter (10Ft)

Example: RDM096-M-3L

For use only with RPM096

## SATEC, Inc.

One Springfield Ave., Summit, NJ 07901  
Tel: (908) 608-0500 Fax: (908) 608-0535  
e-mail: satec@oksatec.com www.oksatec.com



c RU US Pending



BB0098 Rev. A1